

Diplom-Ingenieur

curriculum vitae and selected projects 2021

CORNELIA OTT

film design • architecture • interior design

**Study of Interior Design and Architecture:
University of Wuppertal (1983-1988)
Diploma: February, 1988**

**address Berlin Akazienstraße, 10823 BERLIN, Germany
address Munich Kolbergerstraße, 81679 MÜNCHEN, Germany**

**Tel (mobile): +49 (0)171 478 5826
E-mail: OTTdesign@aol.com**

**key skills Production Design and Art Direction in:
Film/ Architecture/ Interior design**

**including Conception
Preliminary planning
Design
Working drawings
Detail planning
Scale model construction
Presentation
Budgeting
Scouting
Client liaison
Construction supervision**



Art Director for the film:
„JOHN WICK‘ CHAPTER 4‘
in Berlin, Studio Babelsberg, Beelitz

Art Director for the film:
„UNCHARTED‘
in Berlin, Studio Babelsberg

Art Director for the film:
„WITHOUT REMORSE‘
in Berlin, Studio Babelsberg,
Potsdam, Brandenburg

Art Director for the film:
„CHARLIE'S ANGELS‘
in Babelsberg, Berlin, Hamburg,
Moritzburg, Schwerz

Production Designer for the film:
„DOMINO‘
in Antwerp, Amsterdam, Copenhagen,
Almeria, Cagliari

Supervising Art Director for the film:
„JIM KNOFF‘
in Babelsberg, Berlin, Munich, Cape Town

Art Director Germany for the film:
„JASON BOURNE‘
in Berlin

Director: Chad Stahelski
Production Designer: Kevin Kavanaugh
Lionsgate, Summit Entertainment, Thunder Road Pictures

Director: Ruben Fleischer
Production Designer: Shepherd Frankel
Columbia Pictures, Atlas Entertainment, Arad Productions

Director: Stefano Sollima
Production Designer: Kevin Kavanaugh
Paramount Pictures, Midnight Radio, Skydance Media,
Weed Road Pictures

Director: Elizabeth Banks
Production Designer: Aaron Hays
Sony Pictures Entertainment, Brownstone Productions,
Columbia Pictures

Director: Brian de Palma
Schønne Film, Zilvermeer Productions, Recalcati Multi Media,
Light Industry Motion Pictures, N279 Entertainment

Director: Dennis Gansel
Production Designer: Matthias Müssle
Rat Pack Filmproduktion

Director: Paul Greengrass
Production Designer: Paul Kirby
Universal Pictures, Sur Film, Studio Babelsberg Motion Pictures

Supervising Art Director for the film:
„THE RENEGADES“
in Babelsberg, Berlin, Croatia, Malta

Art Director for the film:
„WINNETOU & OLD SHATTERHAND“
in Berlin, Croatia

Art Director for the film:
„MEN & CHICKEN“
in Beelitz, Berlin, Denmark

Art Director for the film:
„THE MONUMENTS MEN“
in Babelsberg, Berlin, England

Production Designer for the film:
„PASSION“
in Berlin

Production Designer for the film:
„AZAZEL“ (pre-production)
in St.Petersburg, London, Liverpool

Art Director for the film:
„UNKNOWN IDENTITY“
in Babelsberg, Berlin

Art Director for the film:
„THE GHOST WRITER“
in Babelsberg, Berlin, Sylt, Usedom, London

Director: Steve Quale
Production Designer: Hugues Tissandier
Luc Besson, Europacorp, Dreiunddreißigste Babelsberg Film

Director: Philipp Stölzl
Production Designer: Matthias Müsse
Rat Pack Filmproduktion

Director: Anders Thomas Jensen
Production Designer: Mia Stensgaard
M&M Aps, Achtundzwanzigste Babelsberg Film GmbH

Director: George Clooney
Production Designer: Jim Bissell
Sony Pictures Entertainment, Twentieth Century Fox Film Corporation, Smokehouse Pictures, Studio Babelsberg

Director: Brian de Palma
SBS Productions, Integralfilm

Director: Paul Verhoeven
TPA Film, Parallel Media

Director: Jaume Collet-Serra
Production Designer: Richard Bridgland
Dark Castle Entertainment, Studio Babelsberg

Director: Roman Polanski
Production Designer: Albrecht Konrad
Runteam, Summit International, Elfte Babelsberg Film

Art Director for the film:
‚PANDORUM‘
in Babelsberg, Berlin

Director: Christian Alvar
Production Designer: Richard Bridgland
Constantin Film Produktion, Impact Pictures

Art Director for the film:
‚VALKYRIE‘
in Babelsberg, Berlin

Director: Bryan Singer
Production Designer: Lilly Kilvert, Patrick Lumb
United Artists, Achte Babelsberg Film

Supervising Art Director for the film:
‚BLACK BOOK‘
in Babelsberg, Berlin

Director: Paul Verhoeven
Production Designer: Wilbert Van Dorp
Fu Works, Egoli Tossell Film AG, Clockwork Pictures

Asst. Art Director for the film:
‚SPEED RACER‘
in Babelsberg, Berlin

Directors: Andy Wachowski, Larry Wachowski
Production Designer: Owen Paterson
Warner Brothers Productions LTD.

Art Director for the film:
‚STOPPING POWER‘
Conception in Babelsberg, Berlin

Director: Jan de Bont
Production Designer: Carlos Menéndez
Intermedia Films, QED International, Action Concept GmbH

Asst. Art Director for the film:
‚V FOR VENDETTA‘
in Babelsberg, Berlin

Director: James MCTeigue
Production Designer: Owen Paterson
Warner Brothers Productions LTD.

Set Designer for the film:
‚AEON FLUX‘
in Babelsberg, Berlin

Director: Karyn Kusama
Production Designer: Andrew McAlpine
Paramount Motion Pictures

Art Director for the films:

**,THE SNOW QUEEN'
Conception in Babelsberg**

**Director: Simon Moore
Production Designer: Joseph Nemec III
Hallmark**

**,THE NEVERENDING STORY III'
in Babelsberg, Berlin**

**Director: Peter McDonald
Production Designer: Rolf Zehetbauer
CineVox**

**,MARLENE'
in Munich, Babelsberg, Los Angeles**

**Director: Joseph Vilsmaier
Production Designer: Rolf Zehetbauer
Perathon-Film, Trebitsch-Film**

**,COMEDIAN HARMONISTS'
in Munich, Vienna**

**Director: Joseph Vilsmaier
Production Designer: Rolf Zehetbauer
Senator Film, Perathon Film, Dor**

**,OTTO – DER KATASTROPHENFILM'
in Babelsberg, Ostfriesland**

**Director: Edzard Onneken
Production Designer: Rolf Zehetbauer
Rialto-Film**

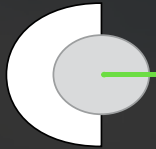
**,MANILA'
in Hamburg, Frankfurt**

**Director: Romuald Karmakar
Production Designer: Rolf Zehetbauer
Pantera Film, Cobra Film**

**,Schlaraffenland'
in Babelsberg, Cologne**

**Director: Friedemann Fromm
Production Designer: Rainer Schaper
hager moss film**

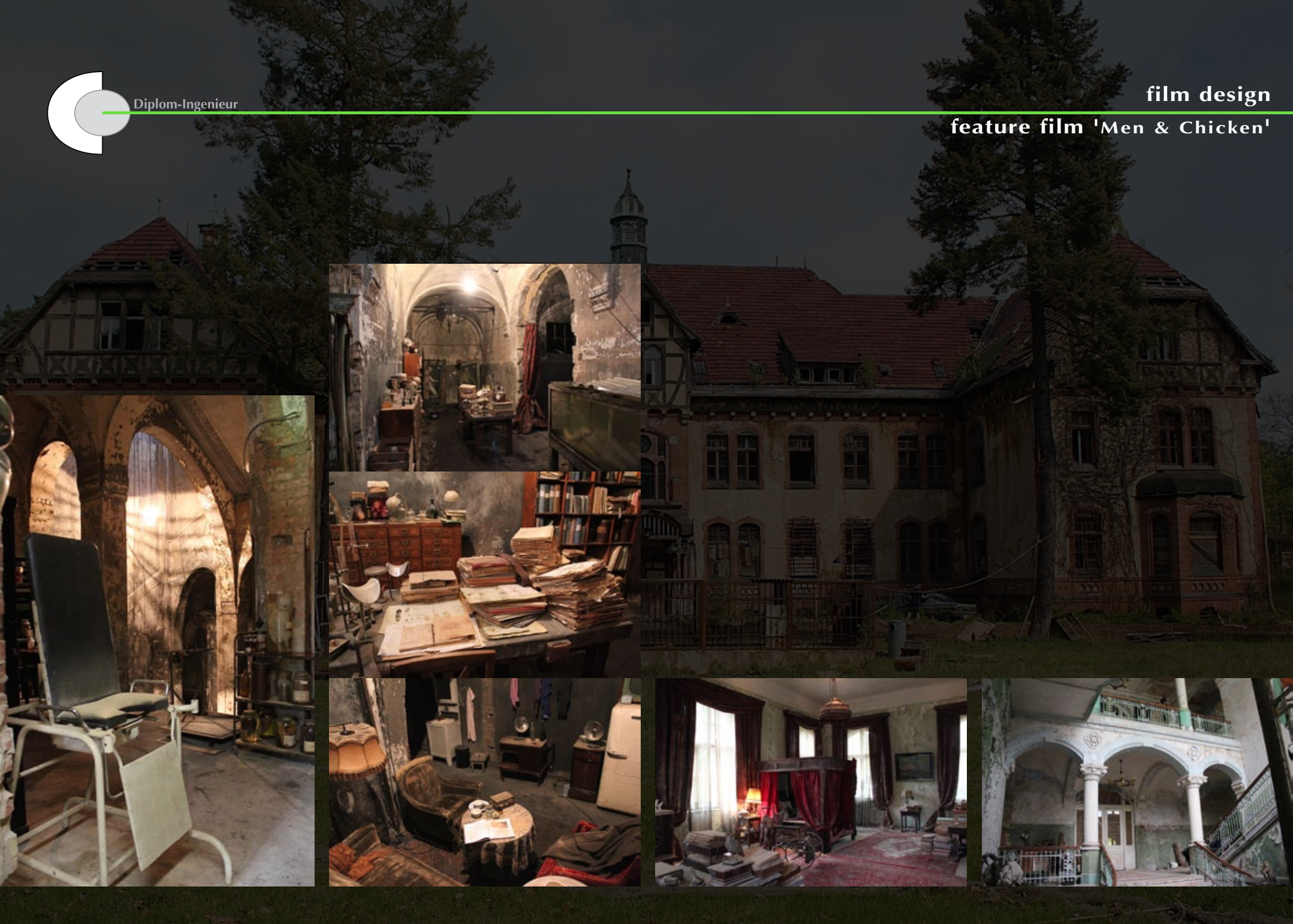


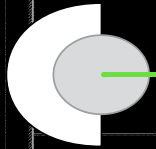


Diplom-Ingenieur

film design

feature film 'Men & Chicken'





Diplom-Ingenieur

as black granite
see Refs

as wood panelling
see Refs

502

830

30

70

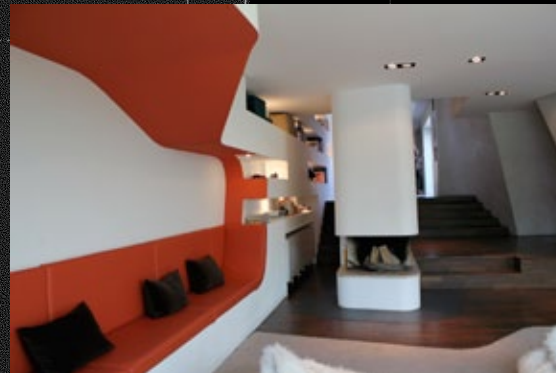
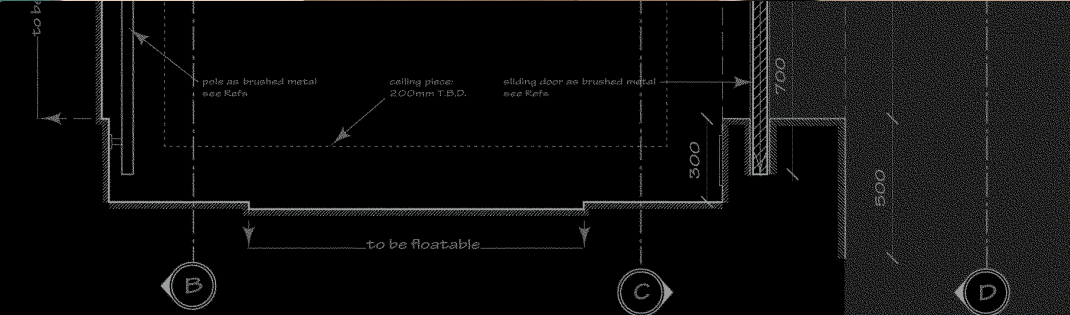
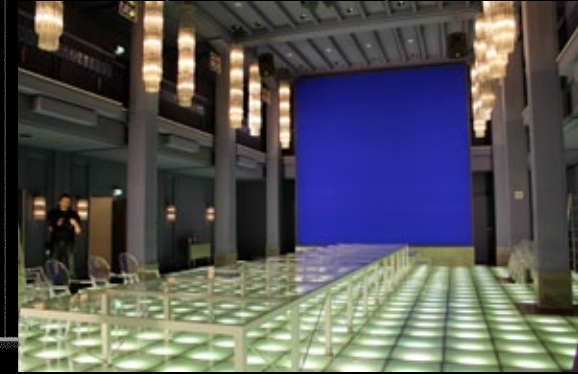
Aspect Ratio 1: 1.85
20mm Lens

2.880

various Graphics
to show diff. storeys;
size T.B.D. as per GRAPHICS

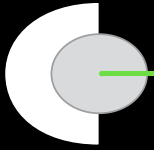
film design

feature film 'Passion'



SECTION ~ (B-B)

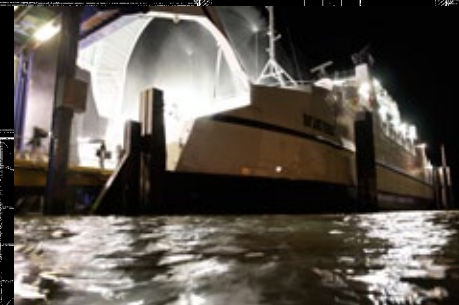
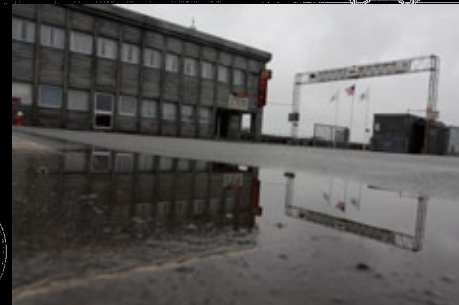
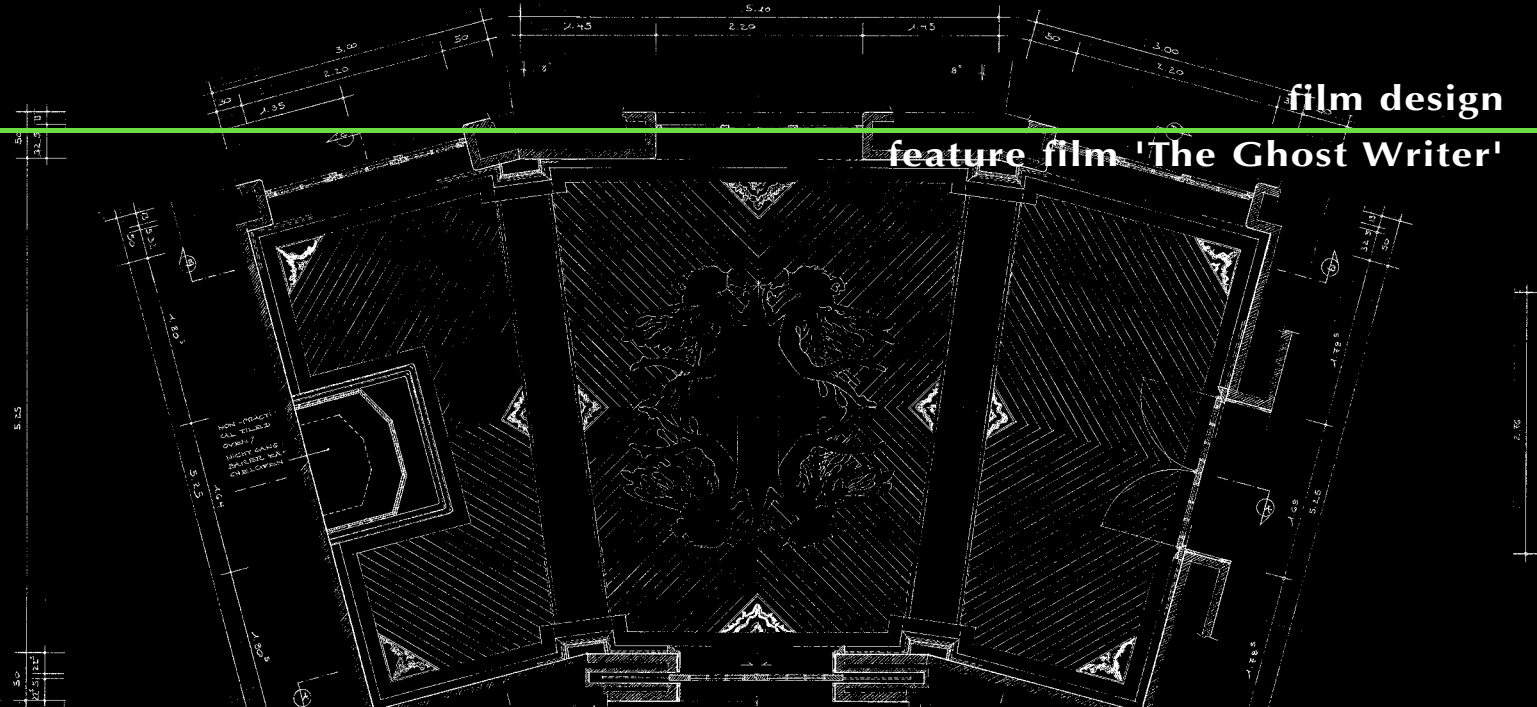
file: 11 IN
11.07



Diplom-Ingenieur

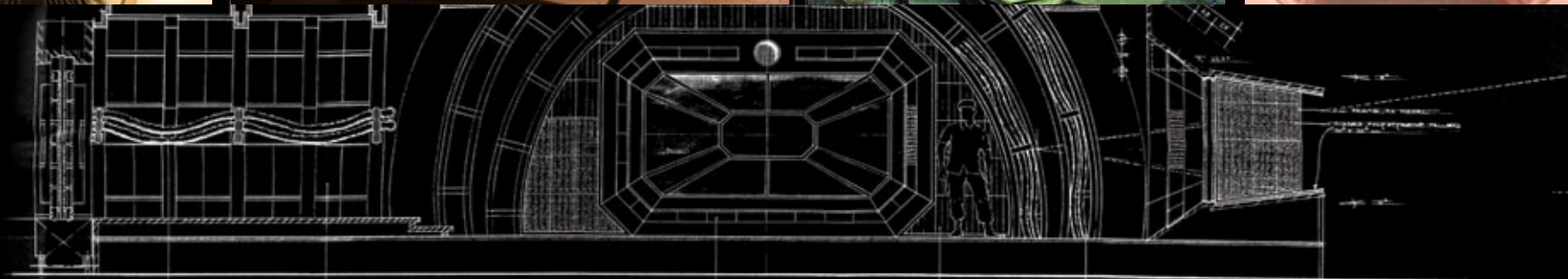
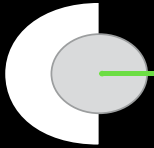
film design

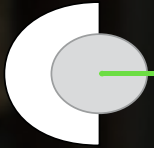
feature film 'The Ghost Writer'

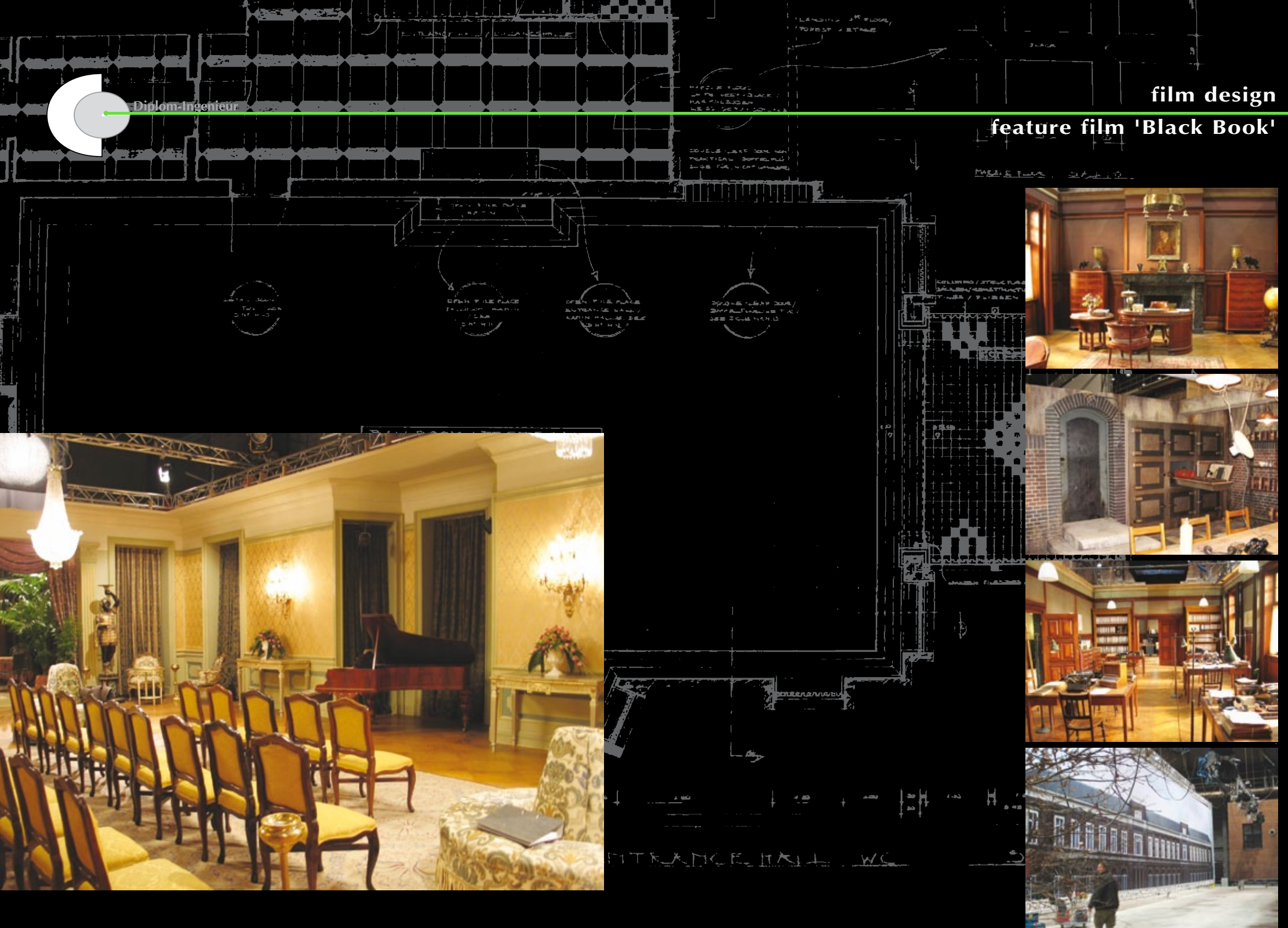


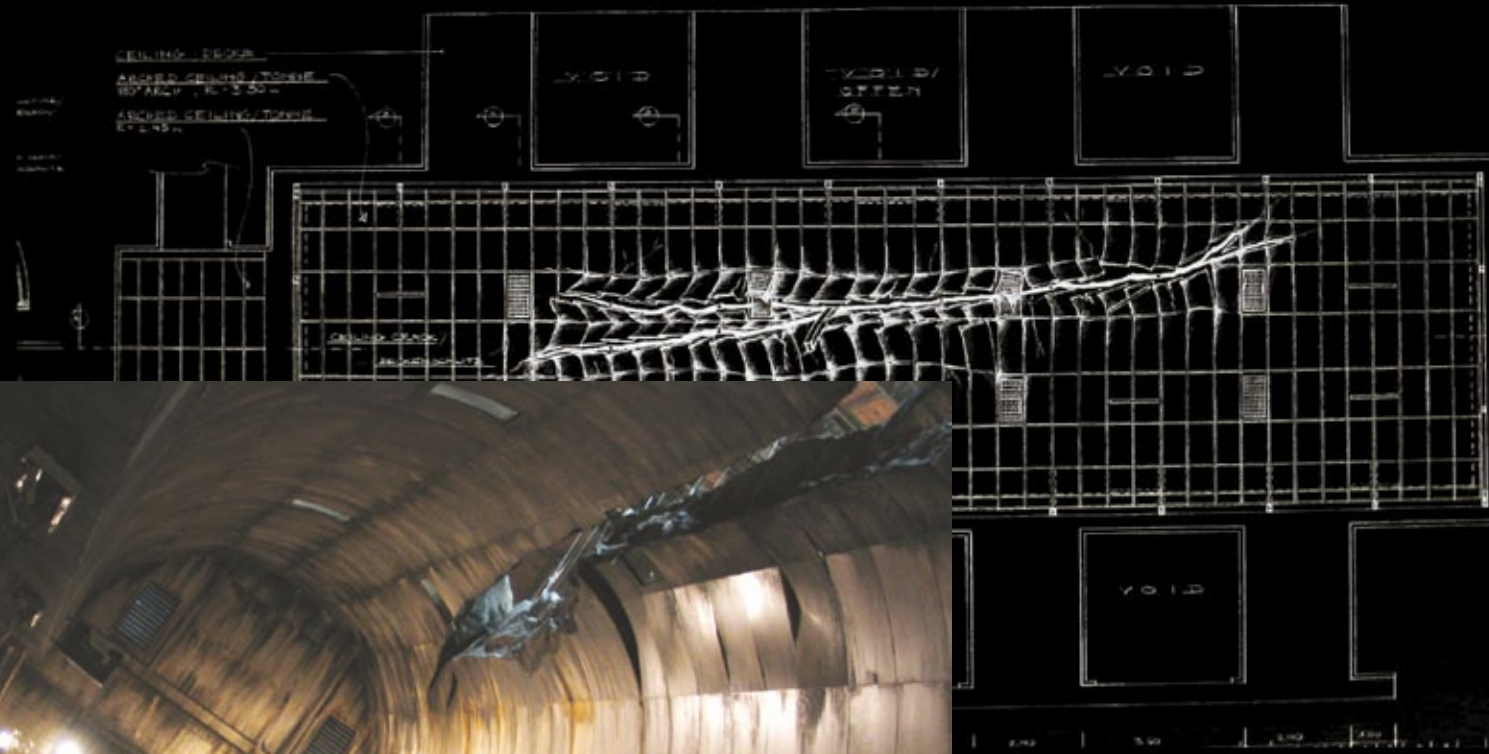
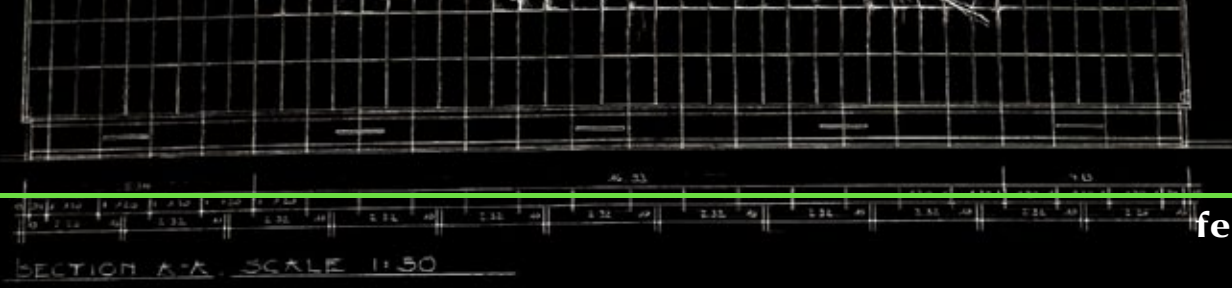
TYP. RECTANG. WINDOWS WITH GLASS PAINTING (ROOF DECK)
 TYP. GANZBAUE FENSTER MIT GLASHALEBERE (DACHTERASSE)
 CUSTOM PANELS /
 HOLZTAFELN
 CEILING WITH 2x2 TILES /
 STRICH-GEWEBE MIT 2x2-TEILEN
 WALKER PLATE
 MOLE-PLATTEN

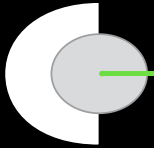
30	2.20	50	1.45	2.20	1.45	50	2.20	30
	2.69	62	4.48	4.48	4.48	62	2.43	
			11.40					











Diplom-Ingenieur

film design

feature film 'Aeon Flux'

